

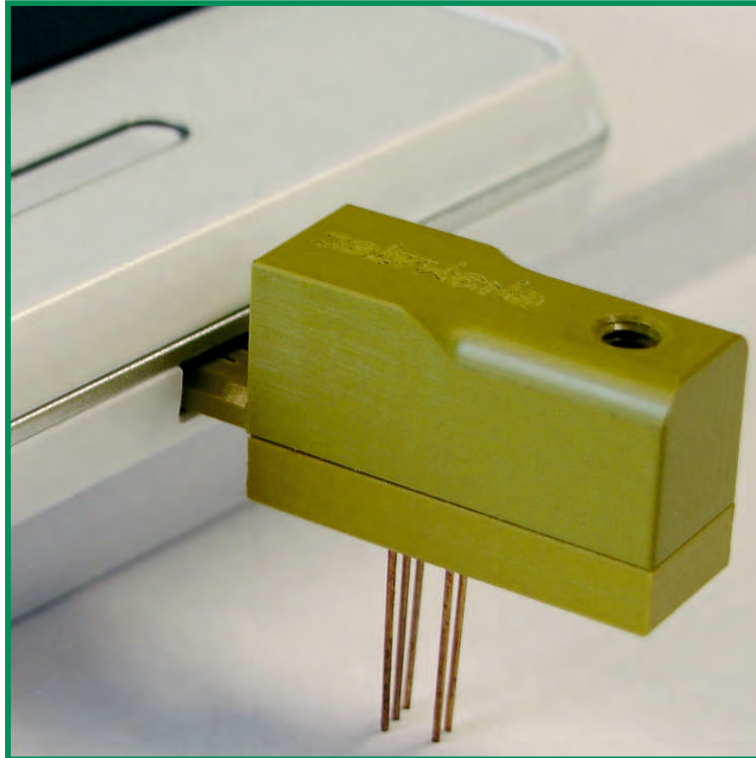


Product catalogue

Testplugs

for functional tests and EOL tests

Small plug

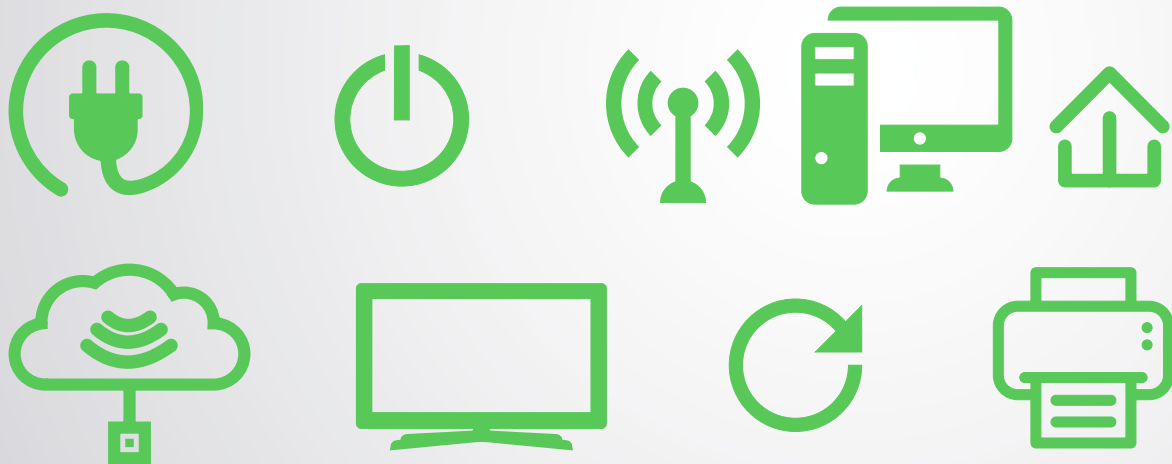


Large effect.

Content

	Page
Industry sectors	4
Overview	5
Function and application	6
RJ-Testplugs	7
USB-Testplugs	9
USB micro Testplugs	10
USB 3.0 Testplugs	11
USB mini Testplugs	12
USB Test Sockets	14
HDMI and eSata Testplugs	15
Testplugs for Displayport, DC, Firewire, TAE	16
Special shapes	17
Fitting and mounting parts	18
Marking units	19
Examples for function usage	20
Mating cycles	22
About Engmatec	23

Industry sectors



In practically every device used in both entertainment electronics and industrial applications, there are interfaces which have to be tested during the production process.

In order to guarantee the reliability of products or assemblies, tests are required during the production process. To carry out these tests, the products are contacted with the plugs by the test system via the built-in interfaces and, in the process, the sockets themselves are, of course, also tested for fault-free performance.

ENGMATEC offers a wide variety of plug emulations for use as test plugs, which have been specially developed for industrial-level tests. These plugs are available for testing all commonly used standard connections that are widely used in the manufacturing industry and in consumer electronics. Nowadays, it is impossible to imagine entertainment electronics, the automotive industry, medical engineering or household technology, telecommunications or PCs without connections such as USB, HDMI, RJ45 etc.

During today's electronic manufacturing process it is usually not only produced in multi-shift operation, but also tested. So that the high production speed is not slowed down by the final quality assurance, it needs appropriate test solutions and components.

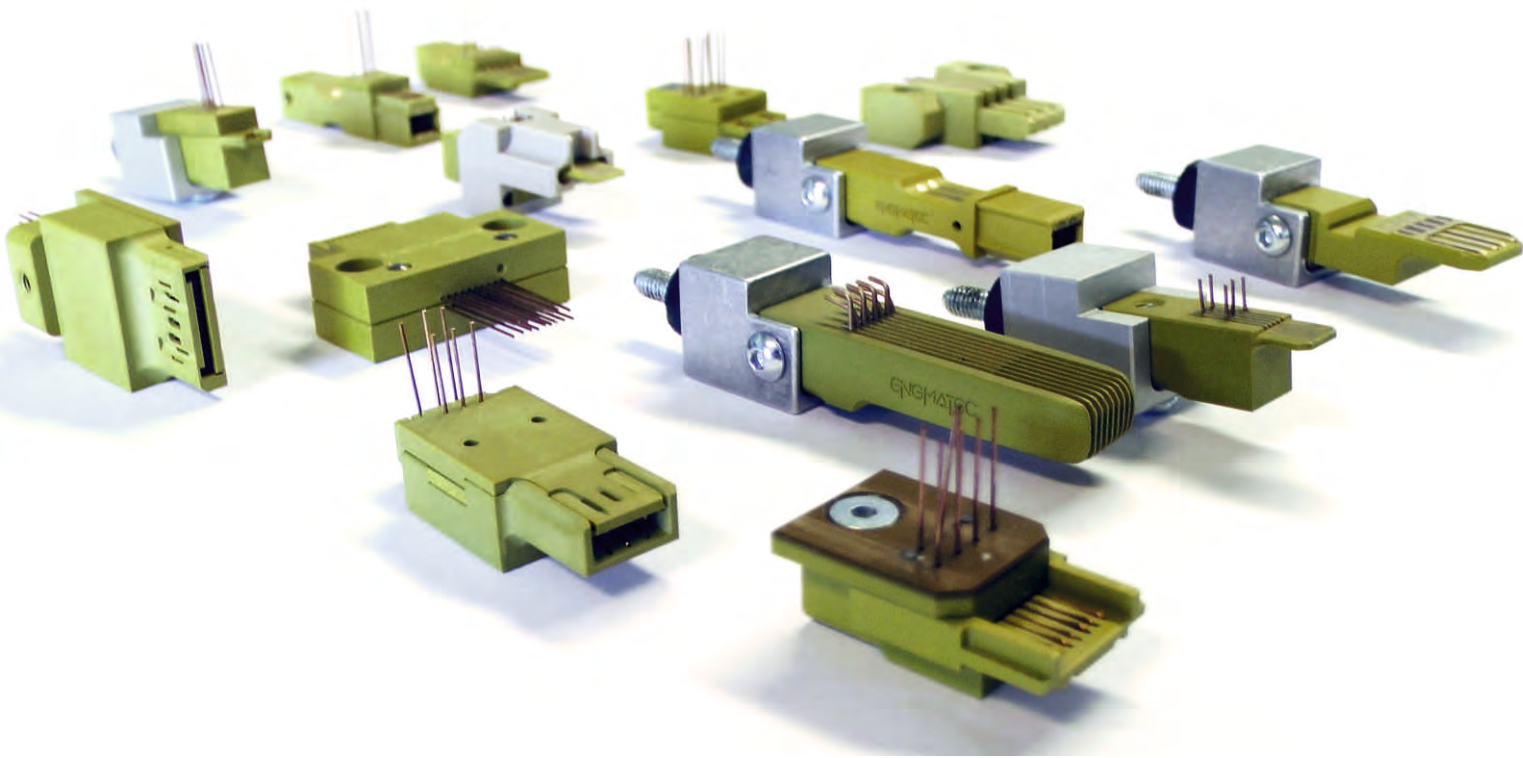
Because plugs are frequently inserted and withdrawn, their contact resistance changes, which means that conventional original plugs are not suitable for this purpose. Special test plugs are therefore necessary for automation-compatible contacting.

The plug emulations made by ENGMATEC are designed for use in functional tests during production and for end-of-line tests, and are suitable for very high mating cycles.

Depending on the interface, up to 200,000 mating cycles are possible.

The plugs can be used for testing both male and female connections.

Overview



Plug emulations for testing at an industrial level achieve an extremely high durability, whereas classic plugs are usually designed for only a few 100 cycle times.

The test plugs are manufactured from a particularly abrasion-resistant, high-tech plastic. The contact wires made of copper beryllium are glued into the plug body and suitable for high mating cycles.

The replicas also have the advantage that, unlike the original plugs, they do not click into place, which further extends the service life. The specially shaped plug tip facilitates low-wear contacting with the plug sockets and prevents premature damage to the contact springs. In conjunction with a pneumatic contacting unit, the plugs can be built into an extremely wide variety of different test adapters.

The delivery program for test connectors from ENGMATEC includes all usual types for RJ-45, USB, USB-Micro, HDMI and Displayport.

Optionally, the following accessories are available:

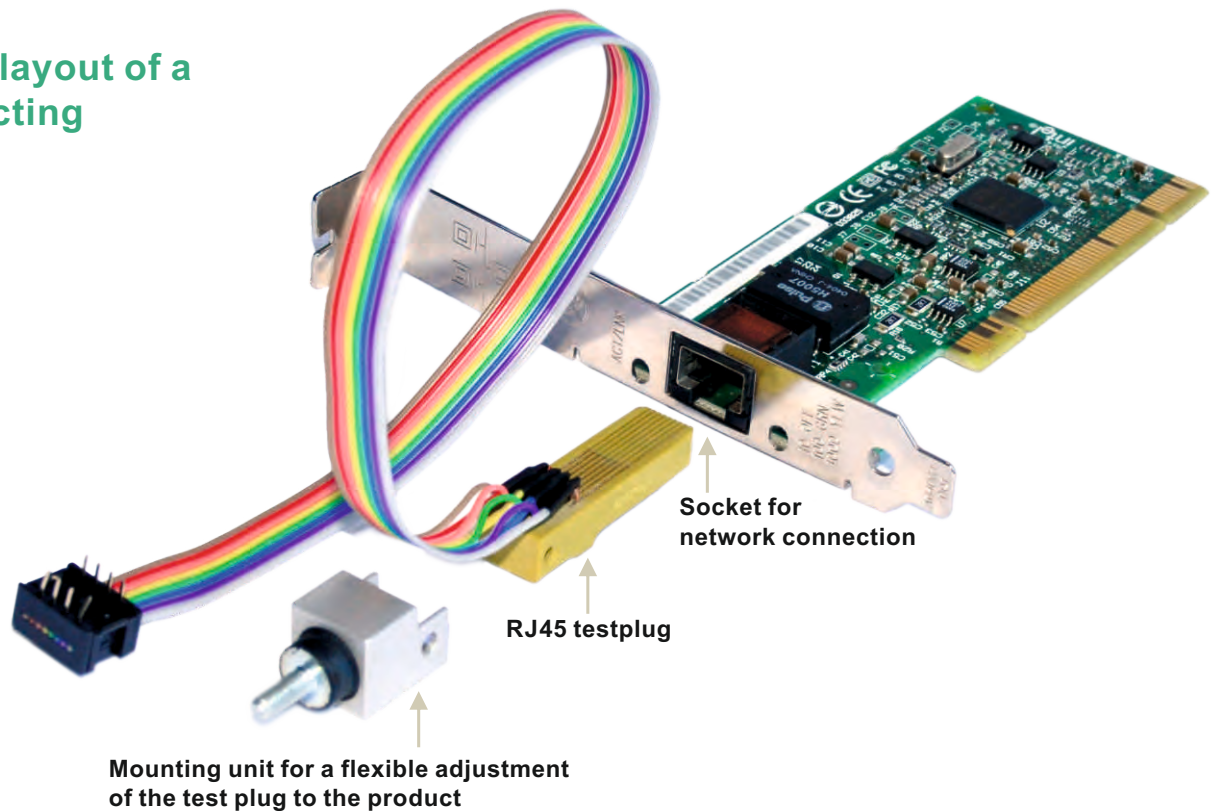
- Floating bearing and self-centering adapters (mounting units)
- Cable and connector assembly according to customer requirements

Special shapes, special lengths and self-coded connector shapes can be realized as requested by the customer. We will gladly advise you with regard to concrete tasks, i.e. whether a plug connection with industry-standard emulations can be contacted wear-free.

On request, we can perform a feasibility study. We require CAD data or data sheets of the plug connection as well as sample parts for this study.

Function and application

Schematic layout of a plug contacting



The test plug is freely moveable and can optimally be aligned with the connector.

Modular Design

The plug contacting consists of a test plug for the transmission of the digital signals that meets your specific requirements and a suitable adapter (mounting unit).

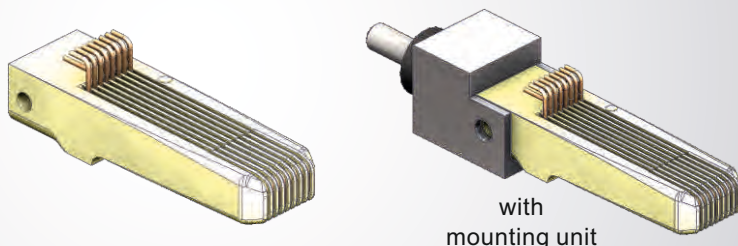
Due to their built-in rubber buffers the mounting shoes have different degrees of freedom and allow a self-centering contact. Because of these flexible fixing tolerances on the product and in the contact area can be compensated (for example in case of misalignment or deviations in the assembly).

The plugs can be easily integrated into test fixtures or contacting modules. By a suitable cable assembly, the plug is connected quickly and solderless to the measuring system.

This makes it easy to replace the test plugs while maintaining the system

RJ-Testplugs

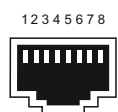
8-pin testplug for RJ45



Order Number	Article
--------------	---------

1014-56-000	RJ45 8-pin (no cord set)
1014-55-000	RJ45 8-pin (cord set, 300 mm cord)
1014-45-000	Suitable mounting unit

(Western-Min plug, modular plug)

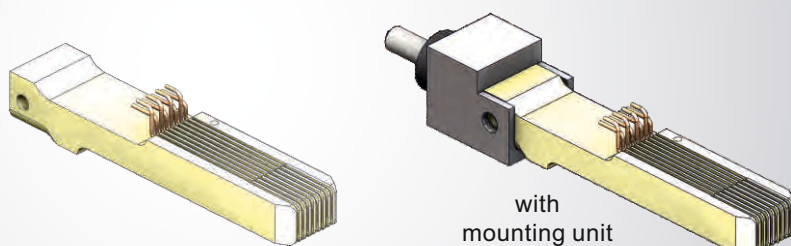


RJ45 Socket

Usage

ISDN cable
Computer networks
(UAE, Ethernet, TIA-568A/B)

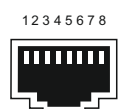
Extended 8-pin testplug for RJ45



Order Number	Article
--------------	---------

1014-92-000	RJ45 8-pin extended (no cord set)
1552-93-000	RJ45 8-pin extended (cord set)
1014-45-000	Suitable mounting unit

(Western-Min plug, modular plug)

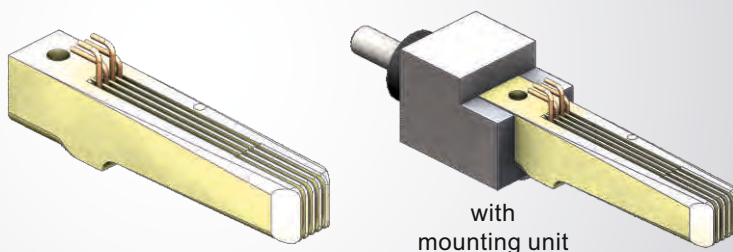


RJ45 Socket

Usage

ISDN cable
Computer networks
(UAE, Ethernet, TIA-568A/B)

4-pin testplug for RJ9, RJ10, RJ22



Order Number	Article
--------------	---------

1014-54-000	RJ9, RJ10, RJ22 4-pin (no cord set)
1014-53-000	RJ9, RJ10, RJ22 4-pin (cord set)
1014-43-000	Suitable mounting unit

(Western-Min plug, modular plug)



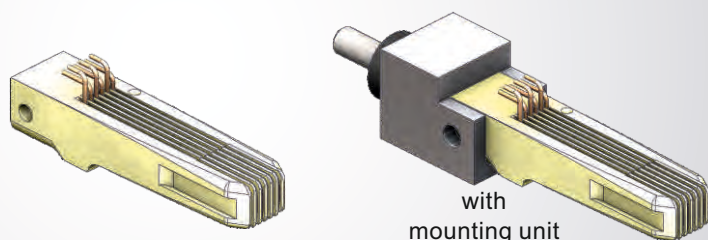
RJ9 Socket

Usage

Telephone receiver cable

RJ-Testplugs

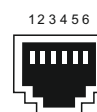
6-pin testplug for RJ11, 12, 14



Order Number	Article
--------------	---------

1014-52-000	RJ11, RJ12, RJ14 6-pin (no cord set)
1014-51-000	RJ11, RJ12, RJ14 6-pin (cord set 300 mm Kabel)
1014-44-000	Suitable mounting unit

(Western-Min plug, modular plug)

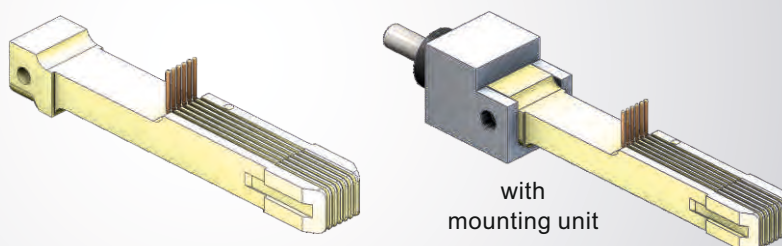


RJ11 Socket

Usage

DSL Router,
Telephone plug on device side

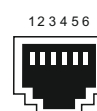
Extended 6-pin testplug for RJ11, 12, 14



Order Number	Article
--------------	---------

1014-29-000	RJ11, RJ12, RJ14 6-pin extended (no cord set)
1552-92-000	RJ11, RJ12, RJ14 6-pin extended (cord set)
1014-44-000	Suitable mounting unit

(Western-Min plug, modular plug)

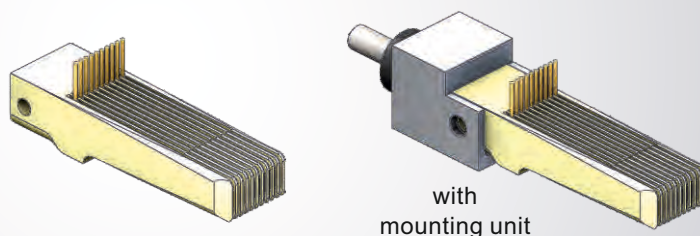


RJ11 Socket

Usage

DSL Router,
Telephone plug on device side

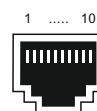
10-pin testplug for RJ50



Order Number	Article
--------------	---------

1014-58-000	RJ50 10-pin (no cord set)
1014-57-000	RJ50 10-pin (cord set)
1014-45-000	Suitable mounting unit

(Western-Min plug, modular plug)



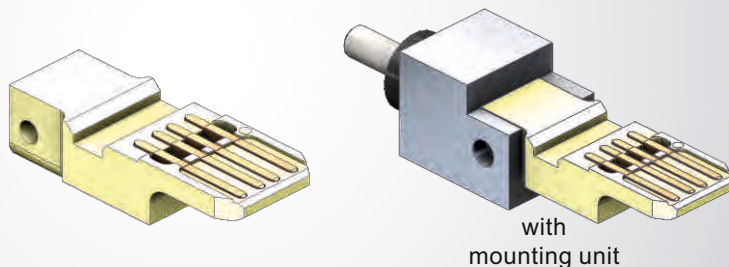
RJ50 Socket

Usage

Data transfer, radio units,
control systems, power supplies,
microphones

USB-Testplugs

4-pin testplug for USB type A



USB 2.0 A
Socket

Usage

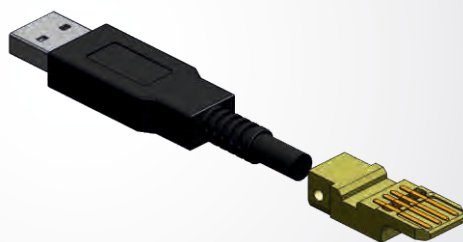
Storage medium,
connection of peripheral devices

Order Number

Article

1014-40-000	USB Typ A 4--pin (no cord set)
1014-48-000	USB Typ A 4--pin (cord set, 300 mm cord)
1014-44-000	Suitable mounting unit

Testplug for USB 2.0 type A (with cord and plug)



USB 2.0 A
Socket

Usage

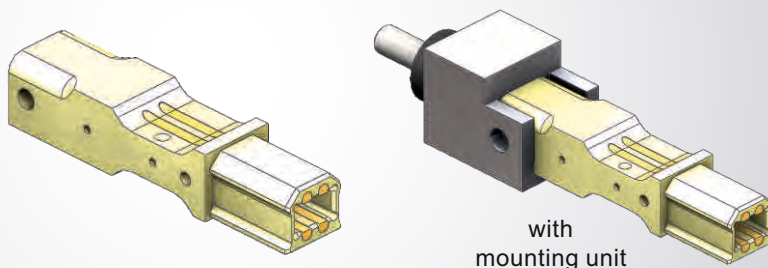
Storage medium,
connection of peripheral devices

Order Number

Article

1956-33-000	Testplug USB 2.0 A with cord and plug
1014-44-000	Suitable mounting unit

4-pin testplug for USB type B



USB 2.0 B
Socket

Usage

Connection of larger
peripheral equipment

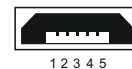
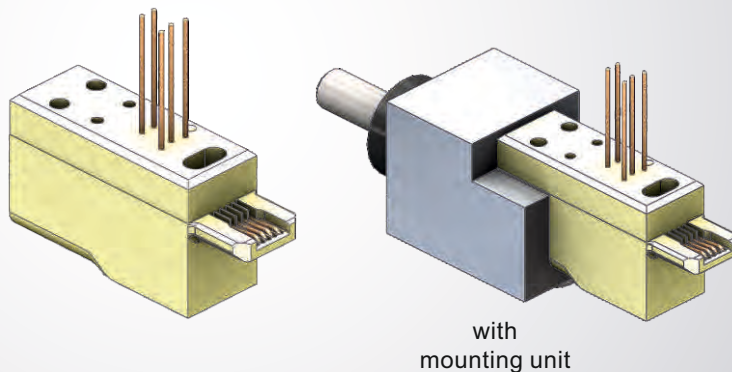
Order Number

Article

1014-46-000	USB Typ B 4--pin (no cord set)
1014-16-000	USB Typ B 4--pin (cord set, 300 mm cord)
1014-44-000	Suitable mounting unit

USB micro - Testplugs

5-pin testplug for USB Micro Typ B



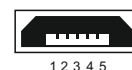
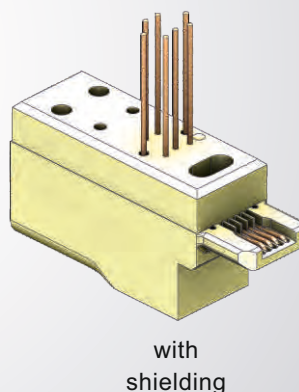
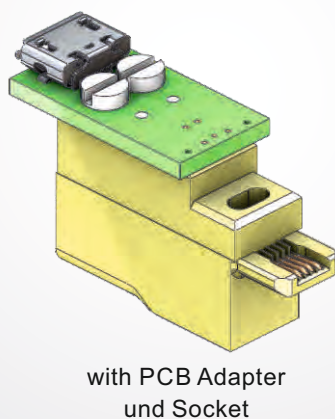
USB Micro B
Socket

Usage

Smartphones, tablets,
smaller portable devices

Order Number	Article
1552-57-000	USB Micro Typ B 5--pin (no cord set)
1552-61-000	USB Micro Typ B 5--pin (cord set, 300 mm cord)
1014-43-000	Suitable mounting unit

5-pin testplug USB Micro type B special models



USB Micro B
Socket

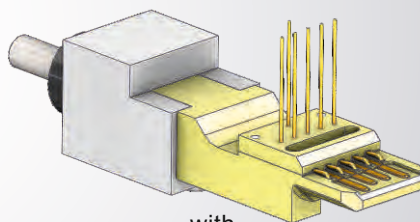
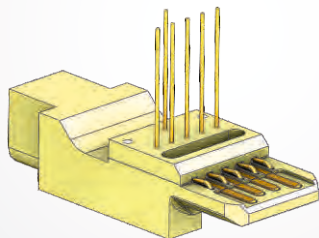
Usage

Smartphones, tablets,
smaller portable devices

Order Number	Article
1872-14-000	USB Micro Typ B 5-pin with PCB adapter and socket
1956-27-000	USB Micro Typ B 5-pin with shielding

USB 3.0 - Testplugs

Testplug for USB 3.0 type A (with shielding)



with
mounting unit



USB 3.0 A
Socket

Usage

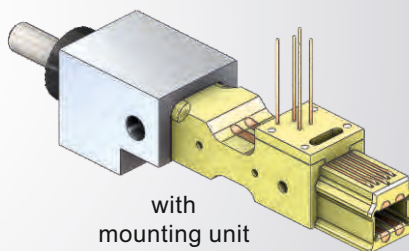
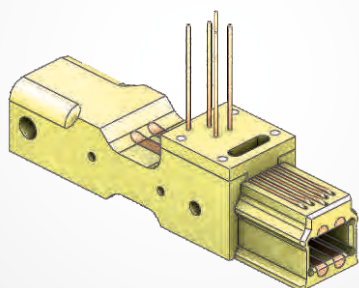
Storage medium,
connection of peripheral devices

Order Number

Article

1552-89-000	Testplug USB 3.0 A (no cord set)
1956-01-000	Testplug USB 3.0 A (cord set, 300 mm cord)
1014-43-000	Suitable mounting unit

Testplug for USB 3.0 Typ B



with
mounting unit



USB 3.0 B
Socket

Usage

Connection of larger
peripheral equipment

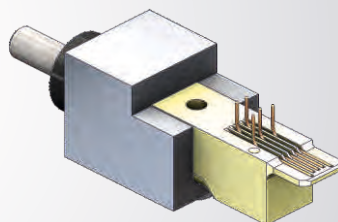
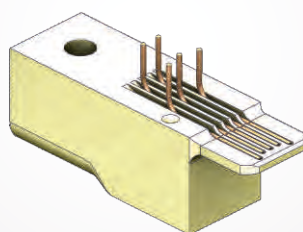
Order Number

Article

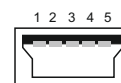
1552-90-000	Testplug USB 3.0 B (no cord set)
1956-02-000	Testplug USB 3.0 B cord set
1014-44-000	Suitable mounting unit

USB mini - Testplugs

5-pin testplug for USB mini Typ B



with mounting unit



USB mini Typ B
Socket

Usage

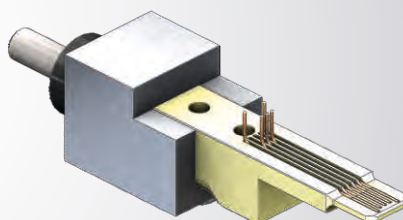
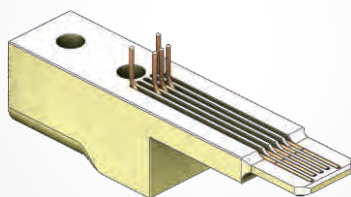
Connection of charger
for mobile devices,
connection of digital cameras,
data transfer

Order Number

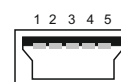
Article

1014-66-000	Testplug USB mini type B (no cord set)
1014-65-000	Testplug USB mini type B (cord set, 300 mm cord)
1014-43-000	Suitable mounting unit

Testplug for USB mini type B extended



with mounting unit



USB mini Typ B
Socket

Usage

Similar USB mini type B

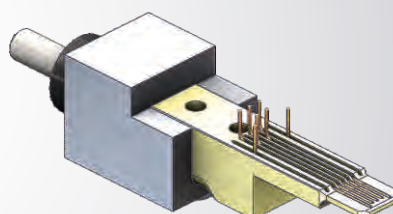
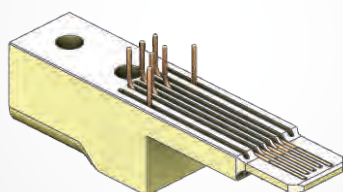
Order Number

Article

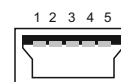
1552-82-000	Testplug USB mini type B extended (no cord set)
1014-43-000	Suitable mounting unit

Cord set on request

Testplug for USB mini type B (extended with shielding)



with mounting unit



USB mini Typ B
Socket

Usage

Similar USB mini type B

Order Number

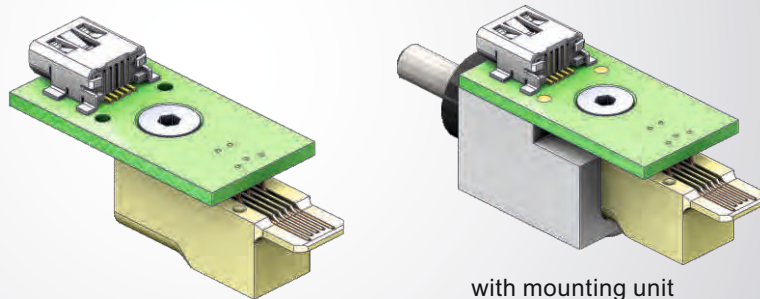
Article

1552-29-000	Testplug USB mini type B extended with shielding
1014-43-000	Suitable mounting unit

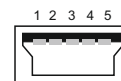
Cord set on request

USB mini - Testplugs

Testplug for USB mini Typ B with PCB adapter and socket



with mounting unit



USB mini Typ B
Socket

Usage

Connection of charger
for mobile devices,
connection of digital cameras,
data transfer

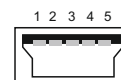
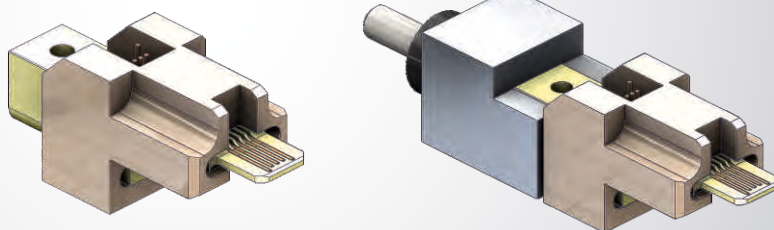
Cord set on request

Order Number

Article

1872-21-000	Testplug USB mini type B (with PCB adapter and socket)
1872-98-000	Special mounting unit

Testplug USB mini type B extended with several encodings



USB mini Typ B
Socket

Usage

Data transfer,
Connection of charger in
the automotive environment

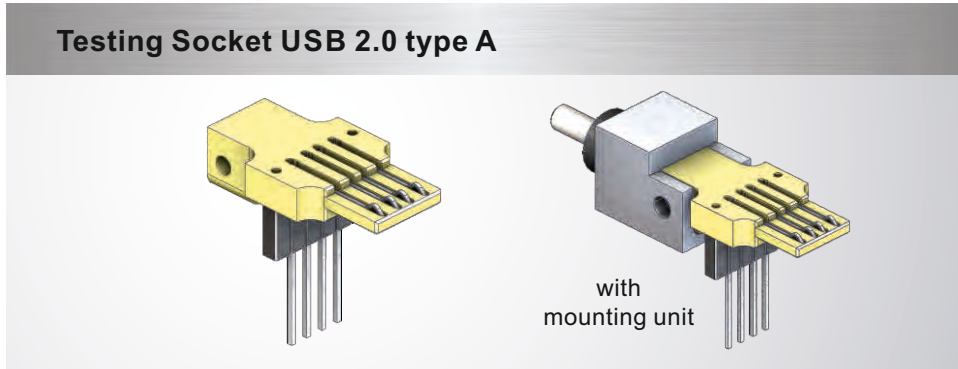
Order Number

Article

1552-86-000	Encoding right, top
1872-39-000	Encoding right, left, top Encoding 49616-0711 + 49616-0715
1872-40-000	Encoding right, top, encoding type D+K
1872-41-000	Encoding right, left, top, encoding type F+H
1552-68-000	Encoding left, top
1956-30-000	Encoding type C
1014-43-000	Suitable mounting unit

Cord set on request

USB Test Sockets



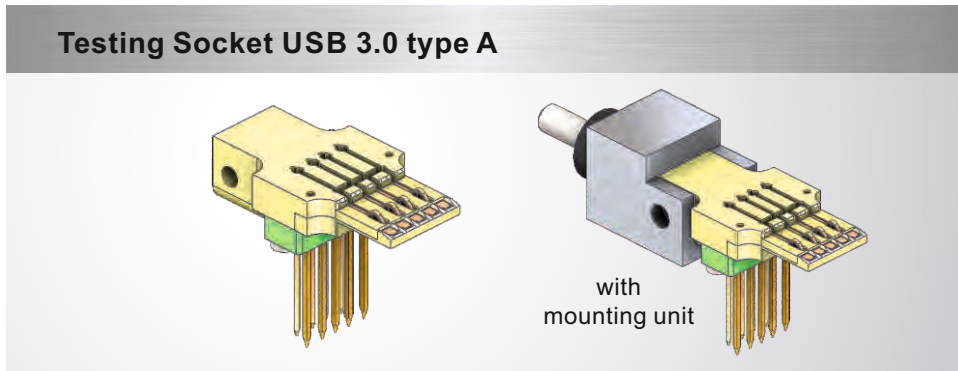
Order Number	Article
1014-76-000	Testing Socket USB 2.0 type A (no cord set)
on request	Testing Socket USB 2.0 type A (cord set)
1014-44-000	Suitable mounting unit



USB 2.0 A
Socket

Usage

Storage medium,
connection of peripheral devices



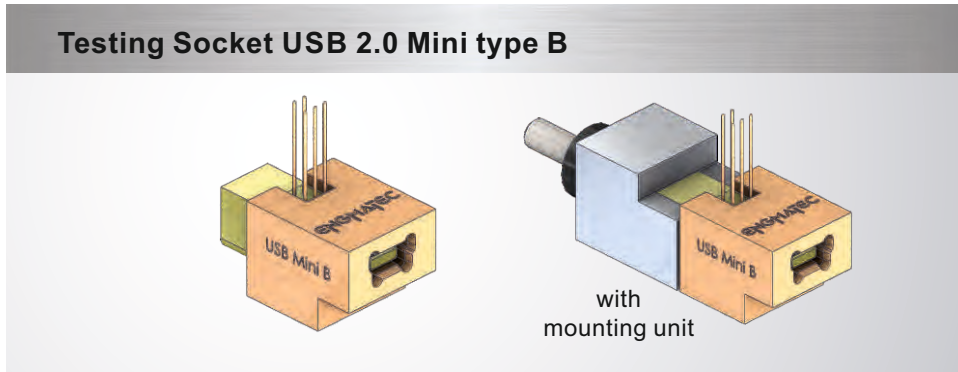
Order Number	Article
1956-09-000	Testing Socket USB 3.0 type A (no cord set)
on request	Testing Socket USB 3.0 type A (cord set)
1014-44-000	Suitable mounting unit



USB 3.0 A
Socket

Usage

Storage medium,
connection of peripheral devices



Order Number	Article
1872-64-000	Testing Socket USB 2.0 Mini type B (no cord set)
on request	Testing Socket USB 2.0 Mini type B (cord set)
1014-44-000	Suitable mounting unit



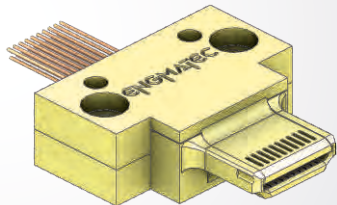
USB mini Typ B
Socket

Usage

Connection of charger
for mobile devices,
connection of digital cameras,
data transfer

HDMI and eSata Testplugs

19-pin HDMI Testplug



HDMI Socket

Usage

Interface for audio and video data

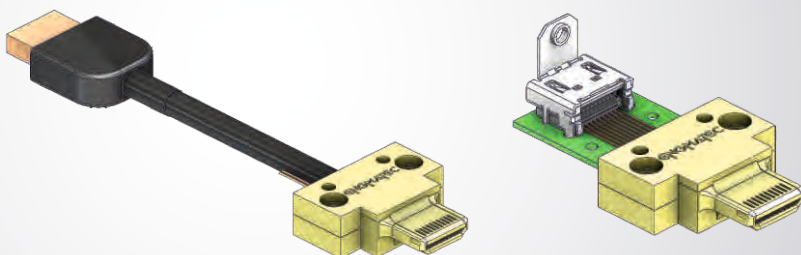
Order Number

Article

1552-59-000

19-pin HDMI Testplug

HDMI Testplug assembled



HDMI Socket

Usage

Interface for audio and video data

Order Number

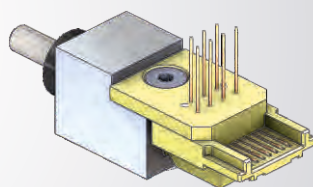
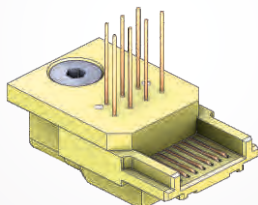
Article

1872-56-000 HDMI Testplug with plug (1000 mm cable)

1552-70-000 HDMI Testplug with female socket (1000 mm cable)

1552-71-000 HDMI Testplug with 19-pin connection board

eSata Testplug



with mounting unit



eSata Socket

Usage

Interface for audio and video data

Order Number

Article

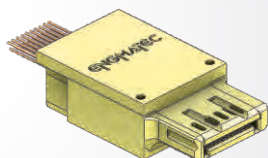
1552-75-000 eSata Testplug (no cord set)

1956-07-000 eSata Testplug (cord set, 300 mm cord)

1014-43-000 Suitable mounting unit

Displayport, DC, Firewire, TAE

Displayport Testplug



Displayport
Socket

Usage

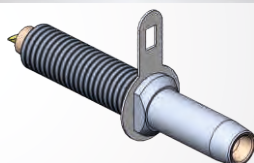
Interface for
audio and video data

Order Number

Article

1872-30-000	Displayport Testplug (no cord set)
1956-04-000	Displayport Testplug (cord set, 2000 mm cord)
on request	Special mounting unit

Power DC plug-in connection Ø 2,1



Power DC
Socket

Usage

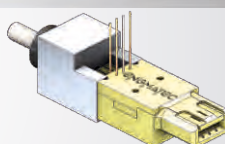
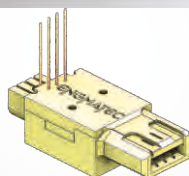
Power connection of
power-supply units and
electronic equipment

Order Number

Article

1638-07-000	Power DC Plug Ø 2,1 (no cord set)
1638-08-000	Power DC Plug Ø 2,1 (cord set, 300 mm cord)
on request	Special mounting unit

6-pin Firewire Testplug 1394



with mounting unit



Firewire
Socket

Usage

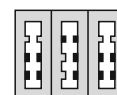
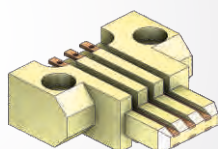
Sound and video technology,
connection of external mass
storages, audio interfaces,
sound systems

Order Number

Article

1872-31-000	Firewire Testplug (no cord set)
1956-05-000	Firewire Testplug (cord set, 300 mm cord)
1014-43-000	Suitable mounting unit

6-pin TAE Testplug



TAE Socket

Usage

Connection
telecommunication

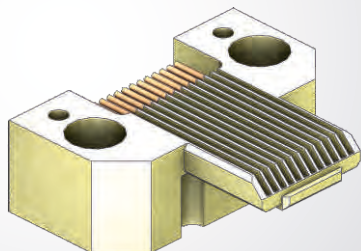
Order Number

Article

1014-28-000	TAE Testplug (no cord set)
1014-50-000	TAE Testplug (cord set, 600 mm cord)

Special shapes

Mobile radio plug type Lumberg



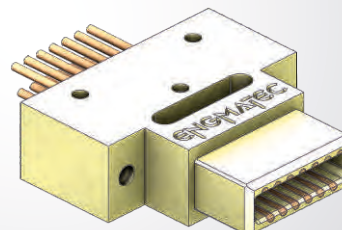
Usage

System interface mobile phone

Order Number

on request

13-pin Testplug RTX



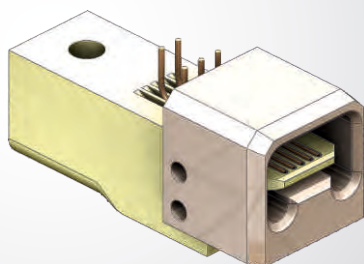
Usage

Connection game console

Order Number

1552-56-000

USB plug mini type B with center unit



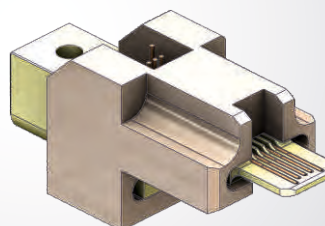
Usage

Data transfer, charger

Order Number

on request

USB mini US-Car with several encodings



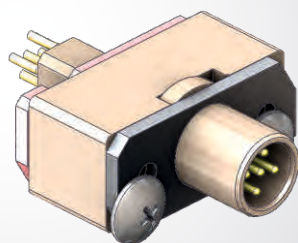
Usage

Data transfer, charger

Order Number

on request

Sensor Plug 5-pin (M12)



with Übergabeschnittstelle

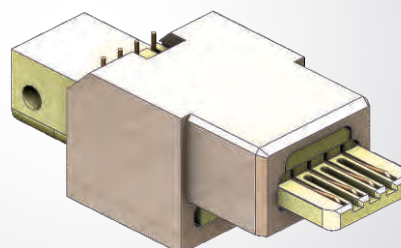
Usage

Electr. interface for sensor systems

Order Number

1715-27-000

LVDS Plug JAE-MX...



Usage

Data and video transfer

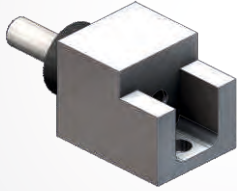
Order Number

1552-84-000

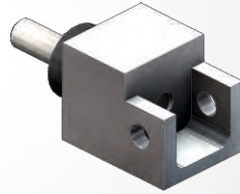
More Testing Plugs are available on request.

Fitting and mounting parts

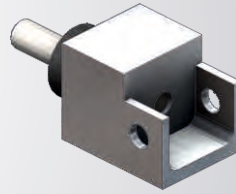
Mounting unit with rubber buffer



1014-43-000



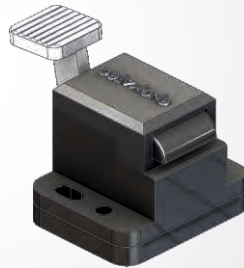
1014-44-000



1014-45-000

Order Number	Article
1014-43-000	Mounting unit S for 4-pin plug
1014-44-000	Mounting unit M for 6-pin plug and USB-plug
1014-45-000	Mounting unit L for 8- and 10-pin plug

Latch



Order Number	Article
1669-01-000	Latch

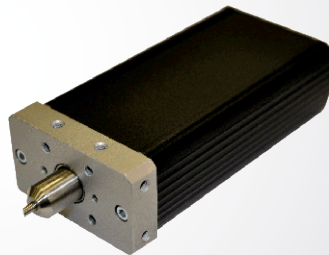
Marking units

Board Marker



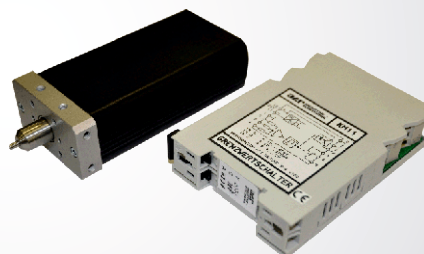
Order Number	Article
1006-01-000	Board marker with suspended carbide-tipped graver Ø3mm and 24V DC motor with gear 1,5W

Board Marker with tachometer generator



Order Number	Article
1006-39-000	Board Marker with tachometer generator with suspended carbide-tipped graver and motor (24 V) inclusive tachometer generator, (without threshold switch and Sub-D-connecting cable)

Board Marker with generator and threshold switch

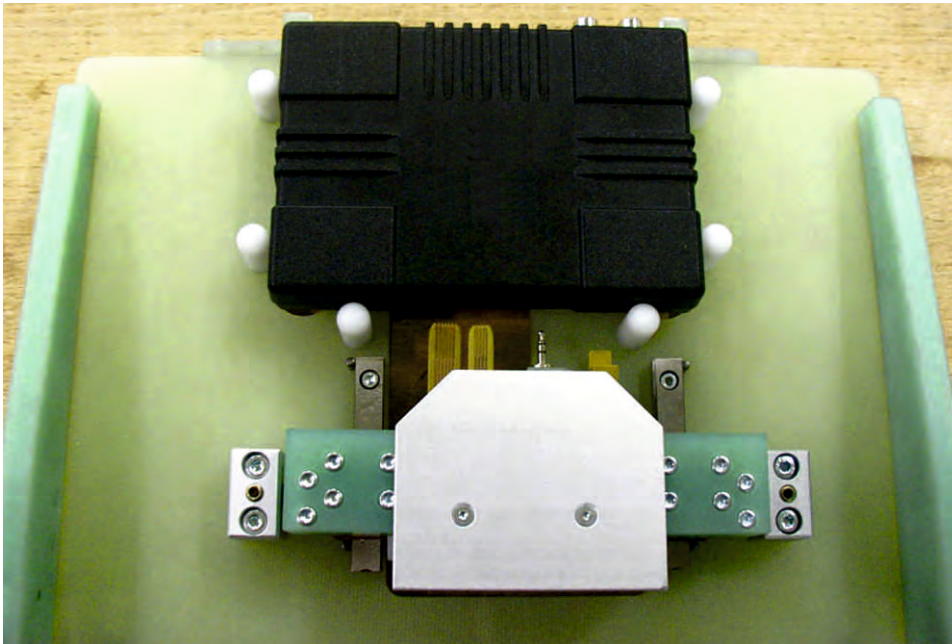
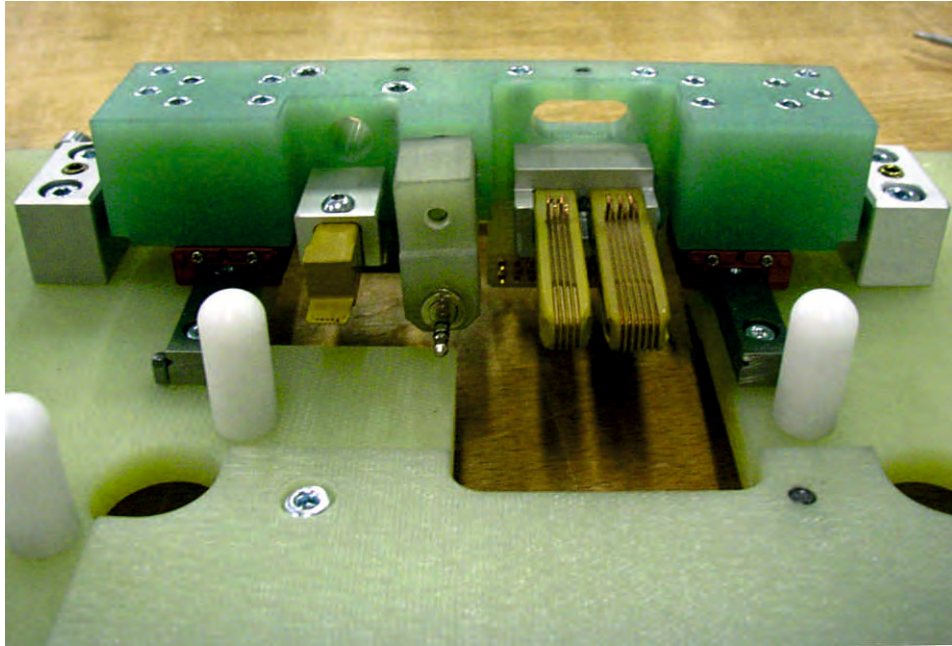


Order Number	Article
1006-26-000	Board Marker with tachometer generator with suspended carbide-tipped graver and motor (24 V) inclusive tachometer generator and threshold switch, with 9 pin Sub-D-connecting cable (5m)

Examples for function usage

Mounted in a drawer system for specific test items:

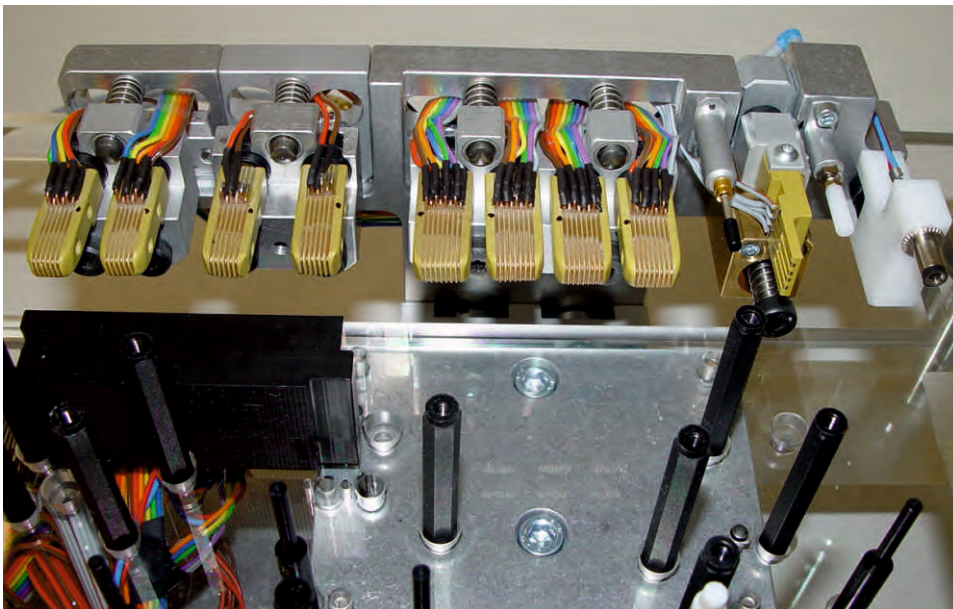
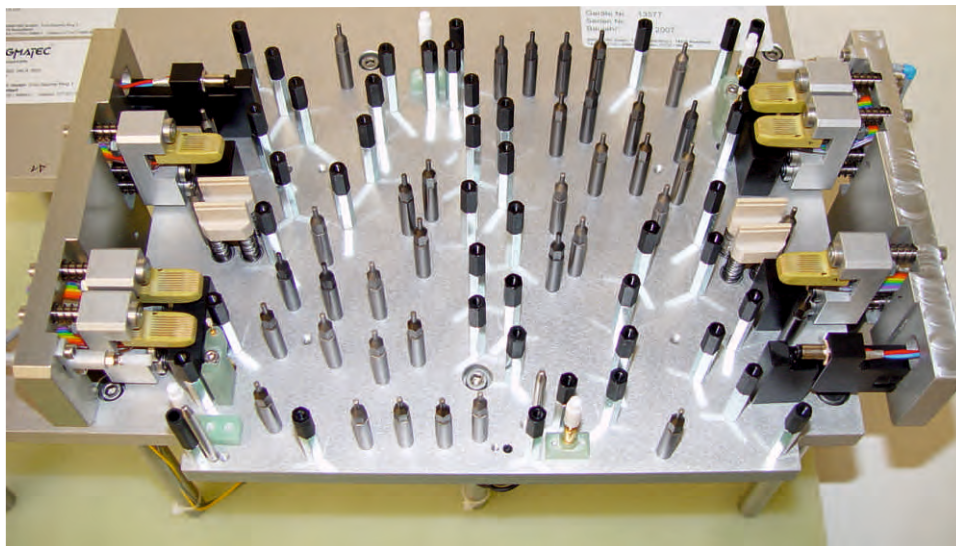
- Western-Min Plugs 4-pin and 6-pin and
- Mini-USB Plugs



Usagesbeispiele

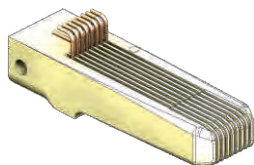
Mounted in inline fixture:

- Western-Min Plugs 8-pin and
- USB Plugs type A



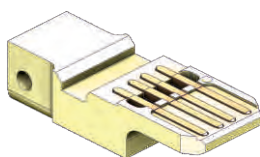
Mating cycles

Mating cycles in thousand



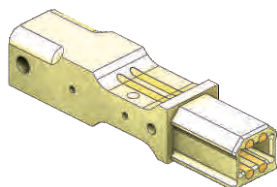
RJ Plugs (Western-Min)

100-200



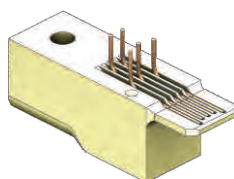
USB type A

80-100



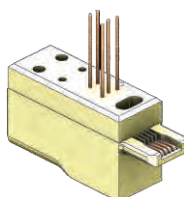
USB type B

80-100



USB mini

50-60



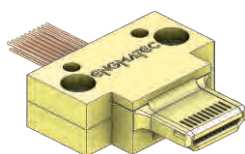
USB micro

40-50



DC Power Plug

60-80



HDMI

100

Leading in automation.

For leaders in electronics.

ENGDATEC develops and builds test systems and assembly equipment for electronic assemblies and equipment. Unique selling point is the combination of automated or manual assembly processes with professionally integrated end-of-line test technology.

ENGDATEC implements automation solutions for the most different production processes, from assembly to packaging.

A team of highly qualified employees strive to fulfill all customer requirements:

- Automation
- Testing technology
- Transport and handling systems
- Testplugs

Focal points are the areas of telecommunications, automotive industry, computer engineering, household appliances and equipment, activities in RF and RV engineering and entertainment electronics.



ENGIMATEC



ENGIMATEC GmbH - Fritz-Reichle-Ring 5 - 78315 Radolfzell - +49 7732 99980

Testing - Assembling - Automating