

TOOLS

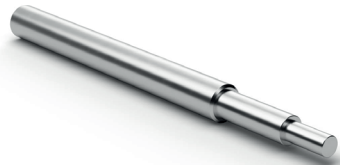
FWZ860HF50

The FWZ860HF50 is used to screw the probes HF860...M into the screwable receptacle H860RD.



FEWZ-822E0

The FEWZ-822E0 is used to insert the receptacles H860... into the mounting plate.



FDWZ-050

The FDWZ-050 is used to insert the signal pin of the HF860 and HF819 if it is possible to replace the signal pin without damaging it.



FZWZ-001

With the release tool FZWZ-001 the pin can be released from the flange. The Mini SMP cable connection can also be easily removed without pulling on the cable.



FZWZ-004 / FZWZ-005 / FZWZ-006

With the removal tool, the signal pin of the HF860 or HF819 can be disconnected and replaced.

FZWZ-004 - Ø0,50 - 0,95mm

FZWZ-005 - Ø0,95 - 1,55mm

FZWZ-006 - Ø1,55 - 1,85mm

