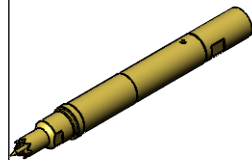


Bemerkungen/Notes:

Mechanische Spezifikationen/Mechanical Specifications

Ring contact:
 Preload: 90cN
 Nominal Force: 400cN ±20%
 Nominal Travel: 4.0mm
 Maximum Travel: 5.0mm

Internal contact:
 Preload: 75cN
 Nominal Force: 130cN ±20%
 Nominal Travel: 2.0mm
 Maximum Travel: 2.5mm



Maßstab/Scale
1:1

Alle Maße sind in mm angegeben,
Measurements are given in mm

Product type	Material	Coating
Assembly		
Insulation	PTFE	None
Contact Head	Beryllium copper	Gold (Au)
Spring Contact Probe		
Insulation	PTFE	None

ISO16016 NOTE, PROPRIETARY AND CONFIDENTIAL:
 Any information contained in this drawing is our sole property and is under copyright protection. It may be used exclusively in connection with a business relationship with us, and must neither be copied nor otherwise reproduced nor made available to third parties without our prior written permission.
 Any violation will give rise to damage claims and is a criminal offense. **FEINMETALL GMBH**



ISO 8015,	Linear Dimensions < 0.5mm	± 0,02mm	Sheet: 1
ISO 2768-mH	Radius and Chamfer < 0.5mm	± 0,05mm	of: 1
	Angular Dimension < 10°	± 0,5°	

Scale: 4:1
Material:
Standard:
Preliminary product:
Coating:
Surface: mm²

						Product type: Radio Frequency Probe, PCB-coax-closed
						Product name: HF860PCBCC014G530MCXfPV2
						Product No.: 1032689
						Index: A
						Replaces: HF86018B0019G530
						Replaced by:
Stat.	Change	Date	Name	Origin: HF86018B0010G530		

